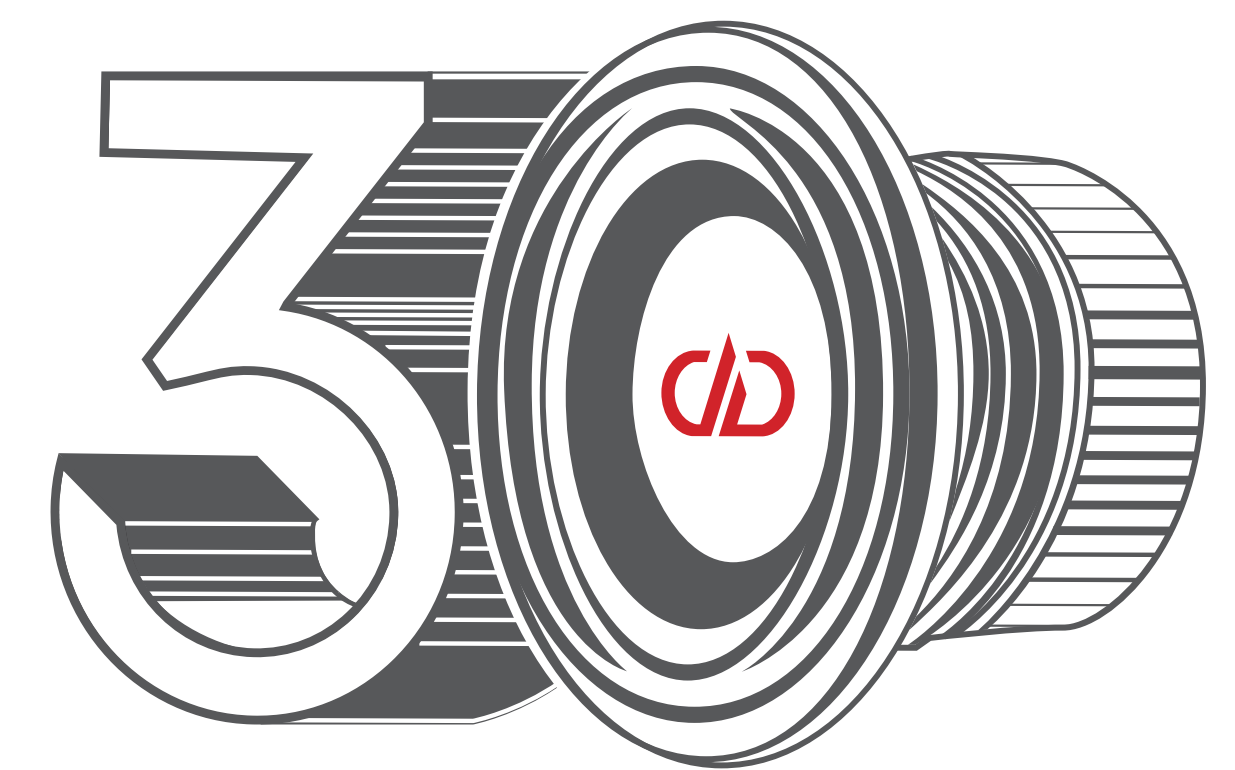


CD AUDIO



YEARS OF SUBWOOFER EVOLUTION

SS2:
1986-1994

- Underhung Voice Coil
- Low Moving Mass Design



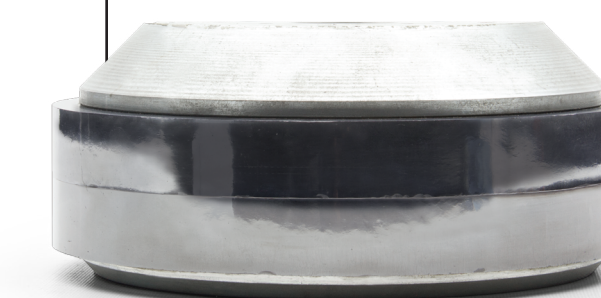
800 Series:
1995-1997

- Increased Top Plate Thickness
- Increased Magnet Size



9500:
1998

- Double Stack 800
Customized for Car Audio



9500a:
1998-1999

- Free Flow Cooling Motor
- Improved Coil Design
- Laminated Fabric Spiders
- Multiple Strand Tinsel Leads



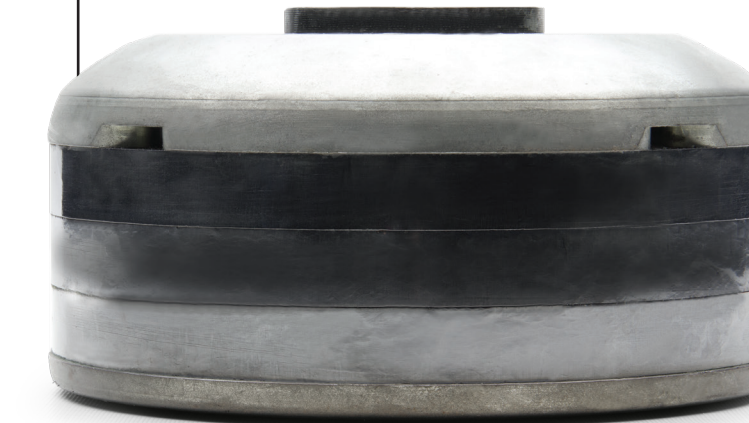
9500b:
2000

- EROM Surrounds
- Synthetic Fiber Blend Cones
- Laminated Lead Wire Spiders



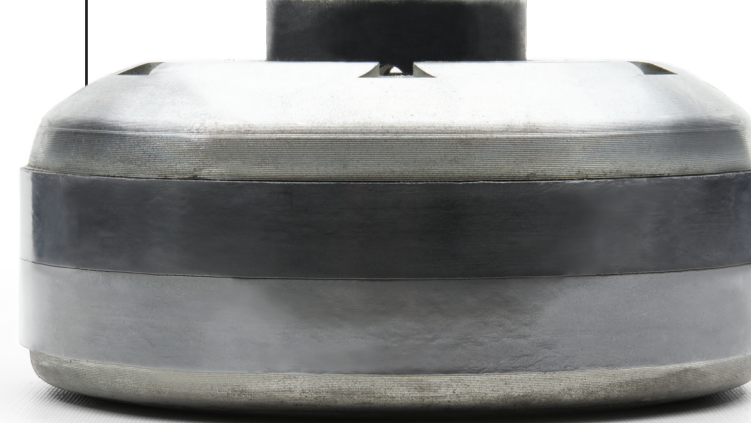
9500c:
2000

- Added Frame Spacer for
Increased Coil Travel
- Improved Production Methods



9500d:
2001-2003

- Direct Connect Lead Wires



9500e:
2003

- Improved Soft Parts



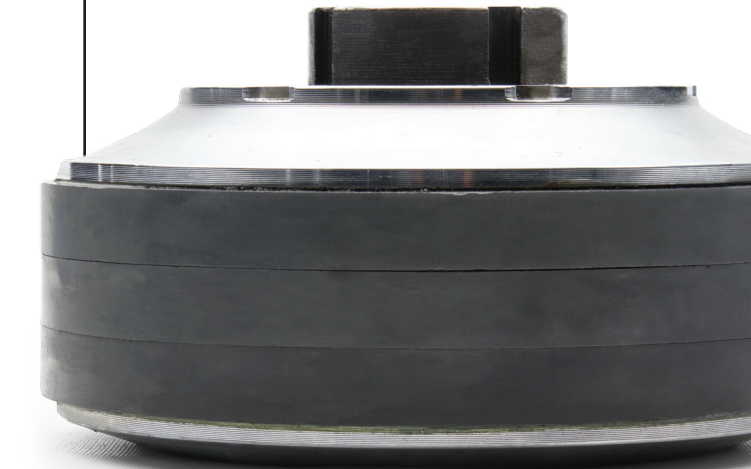
9500f:
2004-2006

- Improved Free Flow Cooling



9500g:
2007-2010

- Deeper 12 Spoke Basket
- Increased Xmax



9500h:
2011

- Pole Mounted Shorting Ring
- Under Cut Pole Piece
- Coil Gap Vents in the Back Plate



9500i:
2012-2014

- 8 Spoke Basket
- 9" Composite Spider System
- All Black Motor Parts
- SuperCharged Option



9500j:
2014-2015

- Increased Motor Height
- Increased Magnet Size
- Improved Coil Design



9500k (ESP):
2016

- V-ROM Surround
- S-Frame
- Carbon Fiber Blend Pulp Cone

